

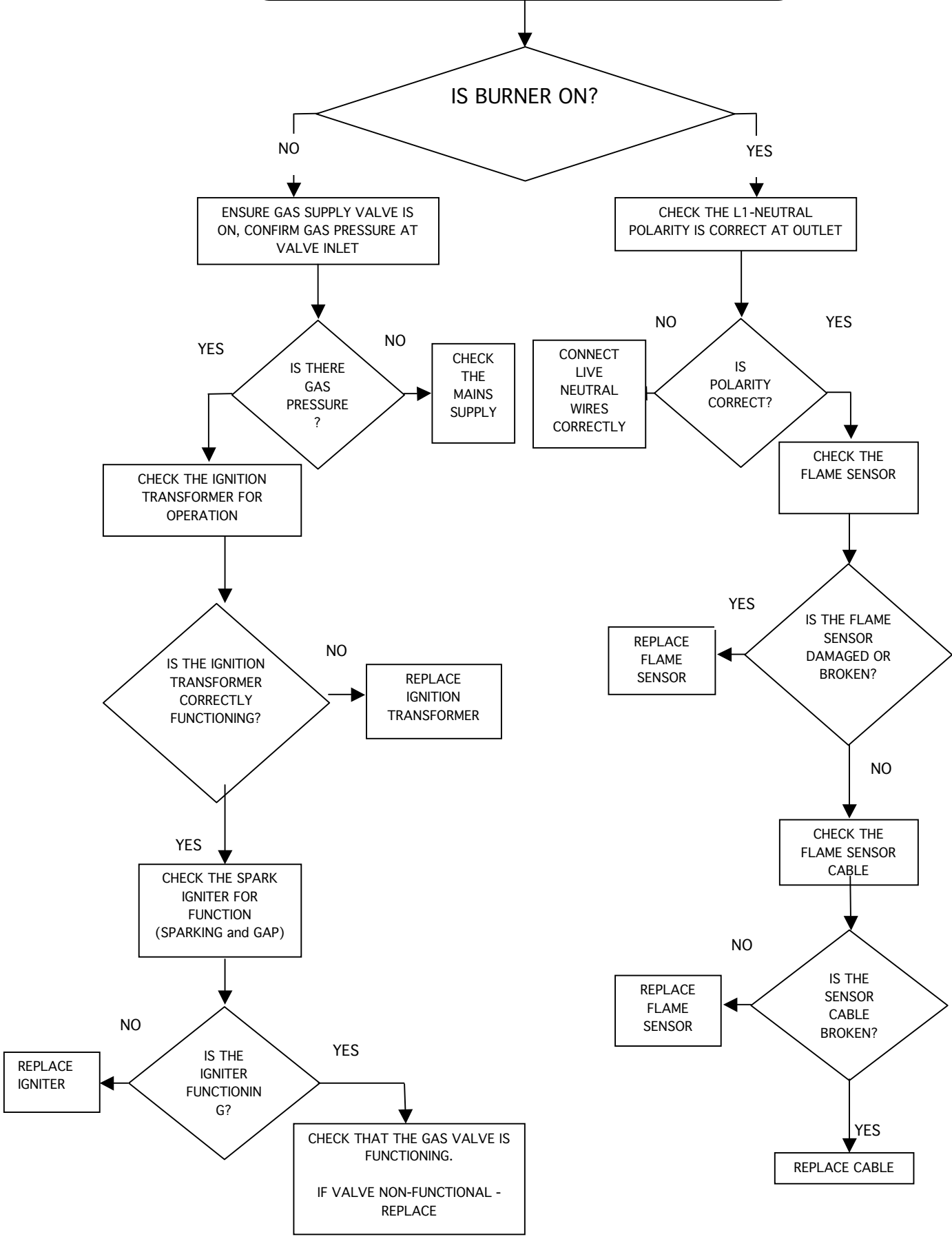
Technical Support Flowcharts

The attached flowcharts will assist in trouble-shooting typical problems that may occur with the FLOWMAX product line.

Flowcharts are provided for the following error codes:

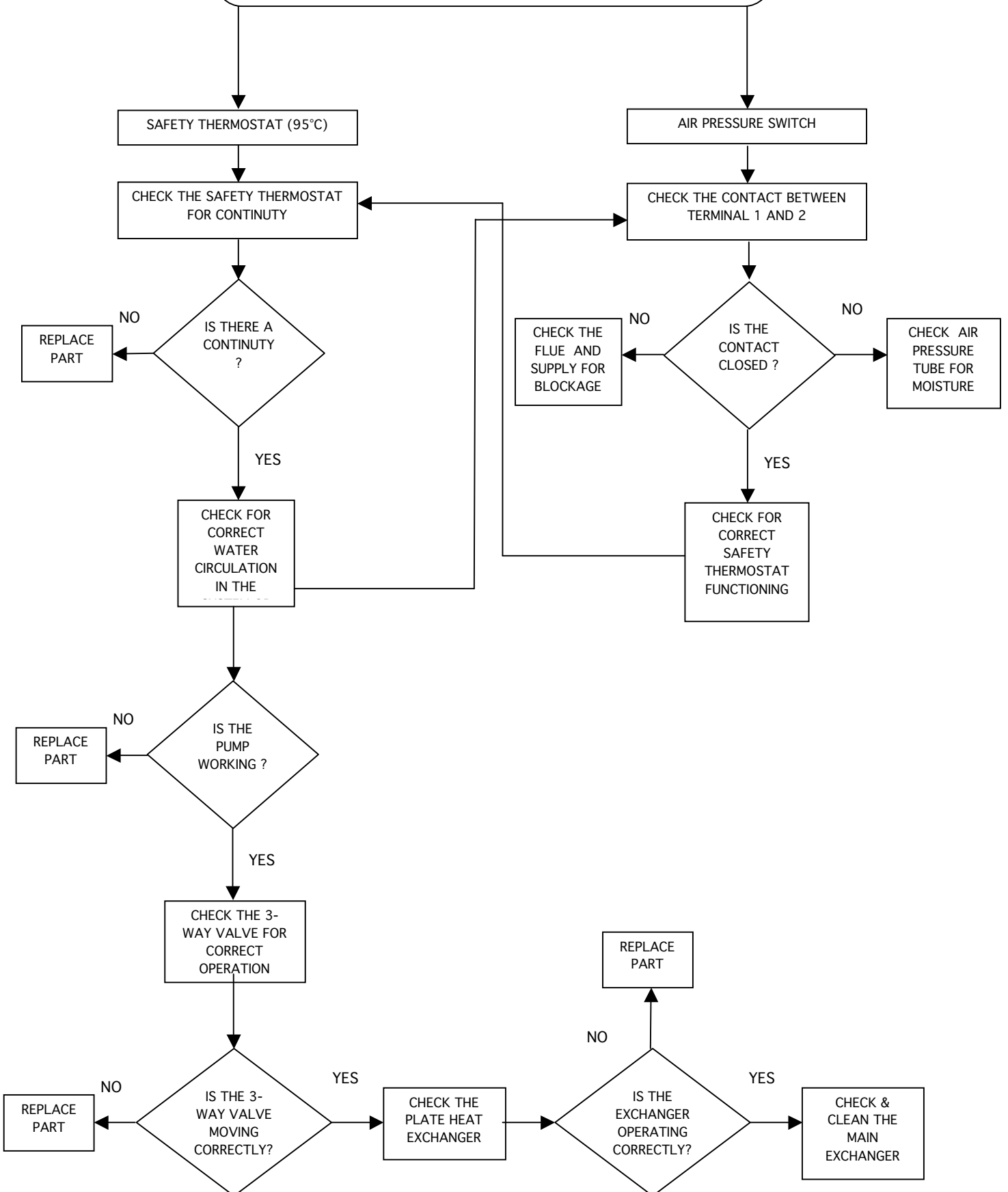
- E01
- E02
- E03
- E05
- E06
- E16
- E22
- E42
- H20

E01 FLAME SENSOR LOCK- OUT



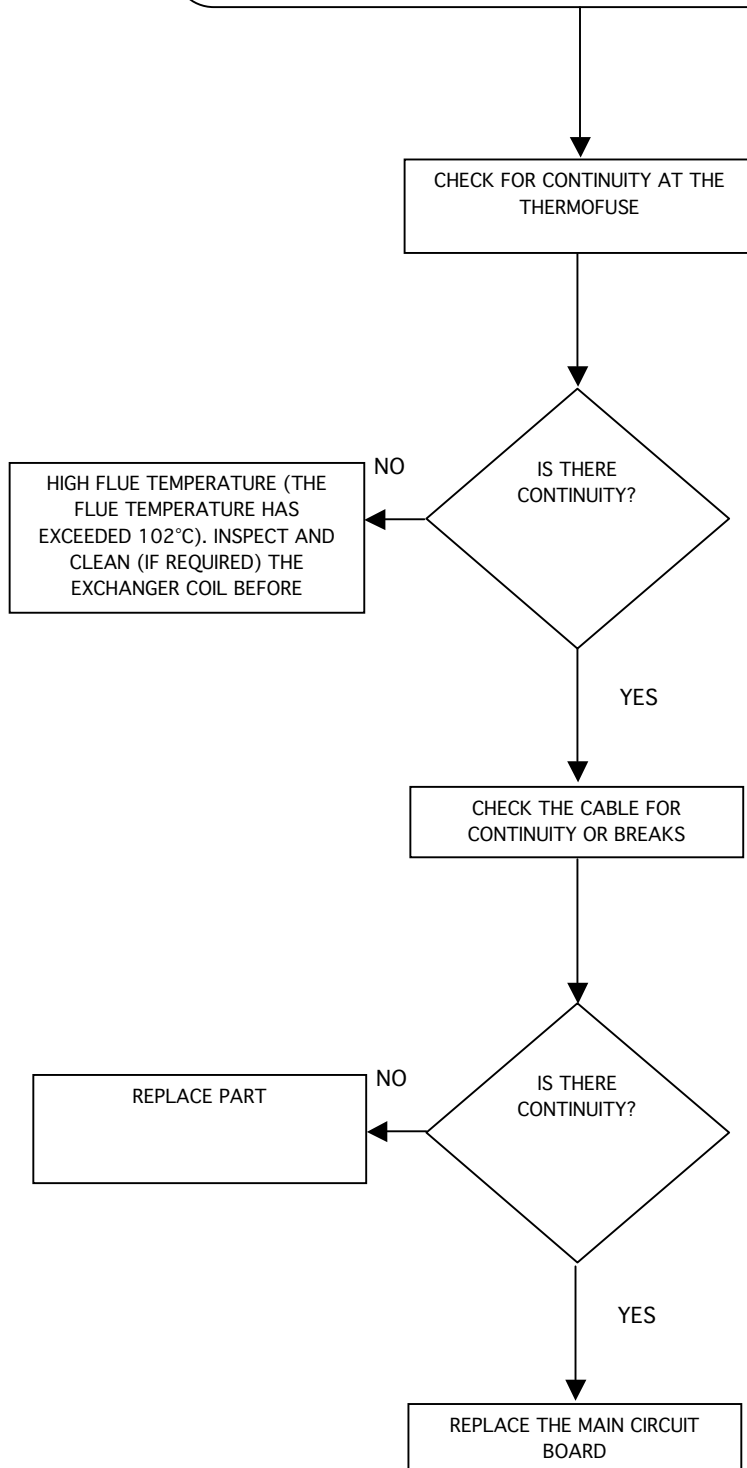
E02

SAFETY THERMOSTAT (95°C) or AIR PRESSURE SWITCH TRIPPED (requires manual re-set of unit)



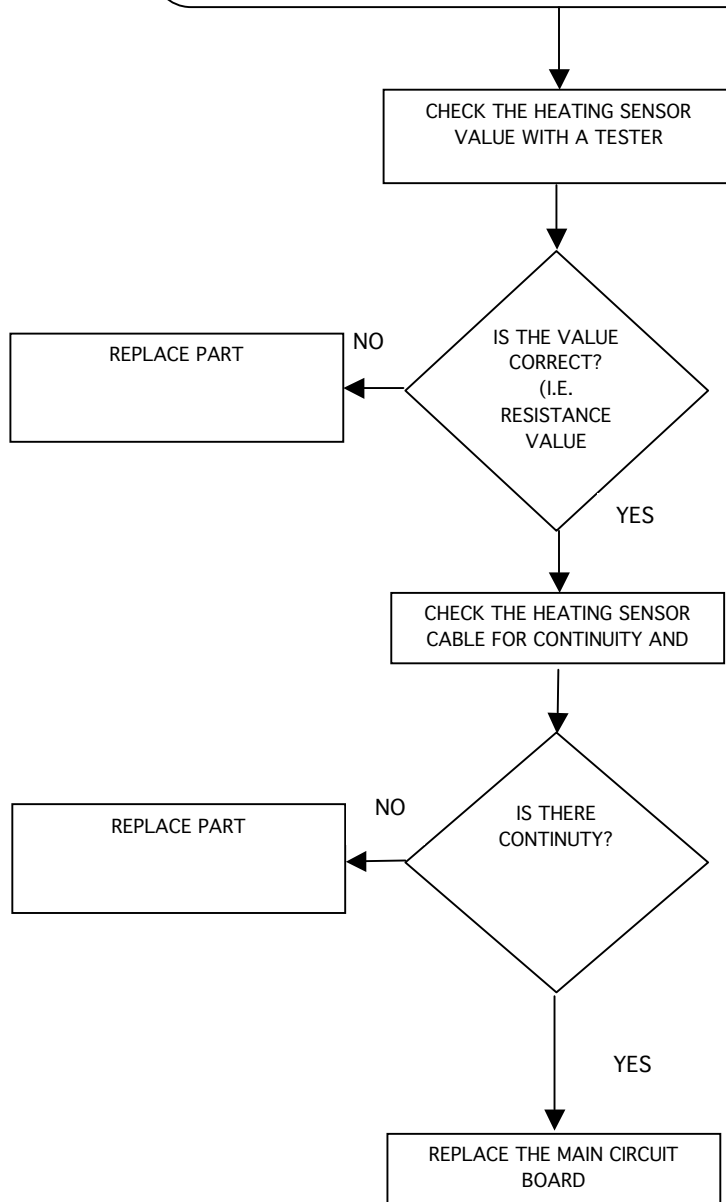
E03

102° C THERMOFUSE FAILURE
(NON-RESETTABLE) **1 TIME ONLY** REQUIRES
PART REPLACEMENT



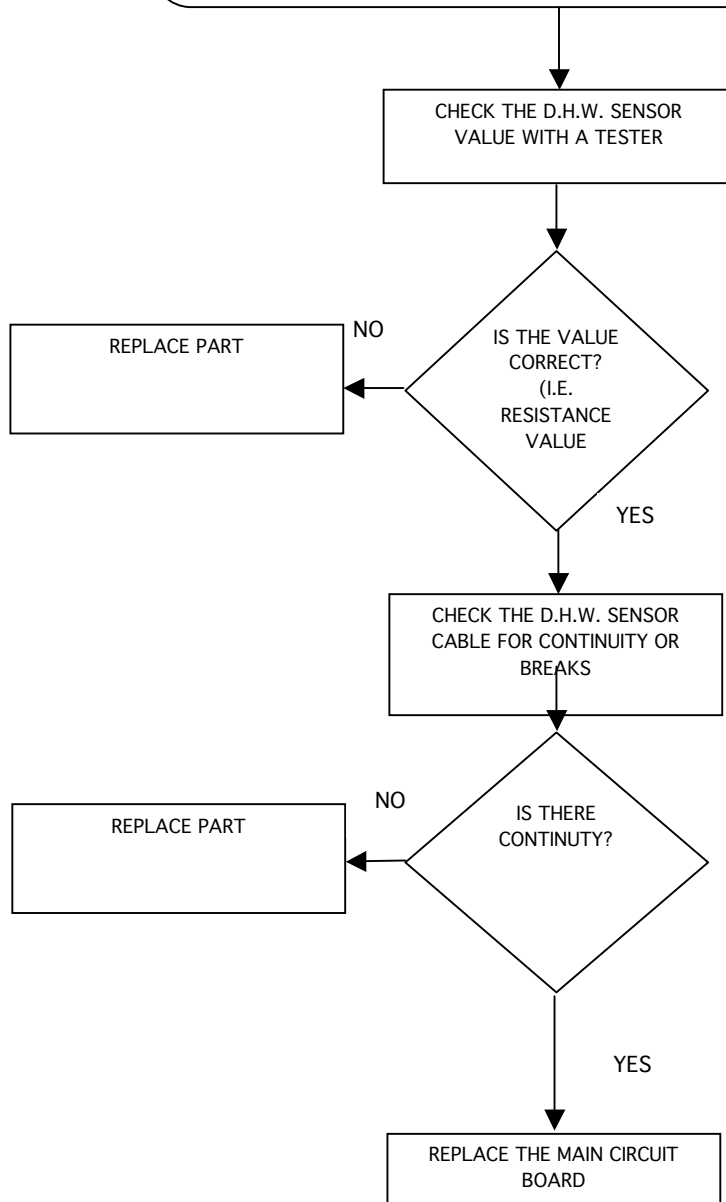
E05

HEATING LOOP TEMPERATURE SENSOR FAILURE



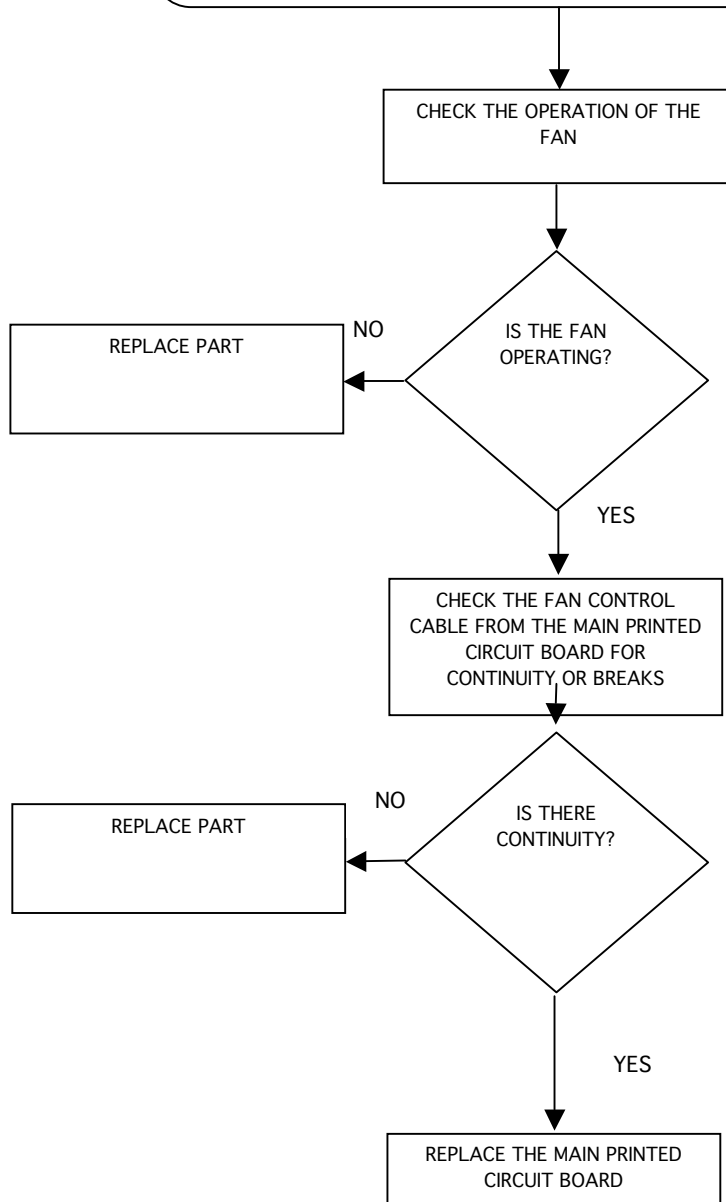
E06

D.H.W. TEMPERATURE SENSOR FAILURE



E16

INDUCED FAN FAILURE



E22

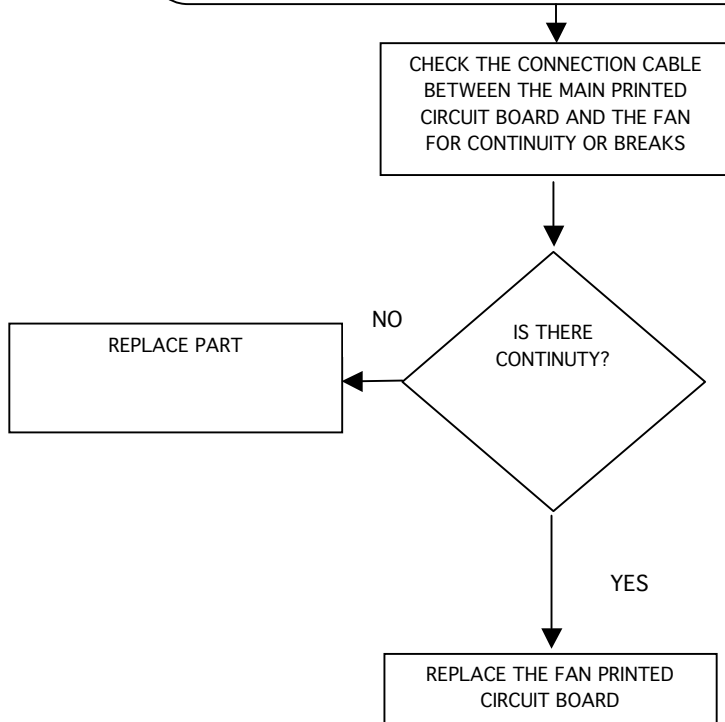
PARAMETERS PROGRAMMING REQUEST
(THIS CODE APPEARS ON INITIAL POWERING
WHEN A MAIN CIRCUIT BOARD IS CHANGED)

MICROPROCESSOR MEMORY LOST

- REPROGRAM PARAMETERS -
SET PARAMETERS AS FOUND IN
INSTALLATION MANUAL FOR
SPECIFIC MODEL AND CAPACITY

E42

FAN PRINTED CIRCUIT BOARD FAILURE



H2O

NO WATER IN THE SYSTEM, INDICATES A LOW WATER SITUATION, UNIT IS OFF UNTIL RESOLVED

